

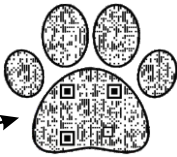
# WORKING TRIALS & TRACKING TRIALS

## WHAT ARE WORKING TRIALS & TRACKING TRIALS?

Both require a dog to follow a human scent trail and indicate any articles dropped along the track. Working Trials also include Agility obstacles, Obedience exercises and various searches. Tracking Trials only consist of a track.



SCAN  
me



How do I  
*get started?*



Dogs must be 14-months old before they can compete, but you can start training at any stage - the sooner the better.

Competitions are generally held on farms and may require some travelling. However, the rewards are well worthwhile.

Tracking Trials vary from Level 1 to Level 5, with the track becoming more complex and requiring longer delays before the dog starts tracking at higher levels.

In Working Trials, dogs progress from Beginner Companion Dog (optional) to Companion Dog, Tracker Dog I, Tracker Dog II and Tracker Dog III. A Police Dog class also exists.

No previous experience is required but it is recommended that you attend socialising and/or puppy classes to provide a solid foundation. You only need to Register your dog, become a KUSA member, and get a record card in order to start competing.

# WORKING TRIALS & TRACKING TRIALS



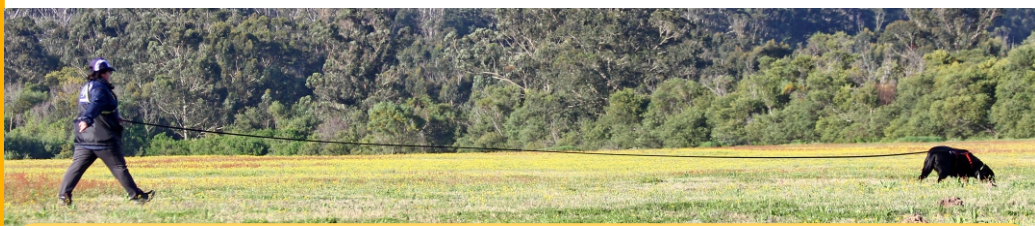
**Working Trials** – this sport requires a well-rounded dog. The exercises are divided into three groups: Control (obedience type exercises), Agility (clear jump, long jump and A-frame) and Nosework (various searches and a track). Dogs must qualify in all sections at a show and achieve a minimum aggregate mark to qualify. Dogs competing in the highest grades, Tracker Dog III and Police Dog (which also contains bitework or protection exercises) can be gain a Champion title..



**Tracking Trials** – dogs are required to follow a human scent trail. The delay on a track (the time the dog is put onto the track after it is laid by a tracklayer) varies from 20 minutes to 3 hours. Dogs can become Champions in the Tracker Trials 5 class.



**TEST YOUR DOG'S NOSEWORK!**



## WHY YOU SHOULD CONSIDER TRACKING

- It is incredibly rewarding to see your dog use its natural ability and instinct to solve problems.
- It is a challenging dogsport that gives a huge sense of satisfaction and reward.
  - You build a strong relationship with your dog.
  - Scent work has been shown to lower stress levels in dogs.

**For pedigreed & crossbreed dogs**